



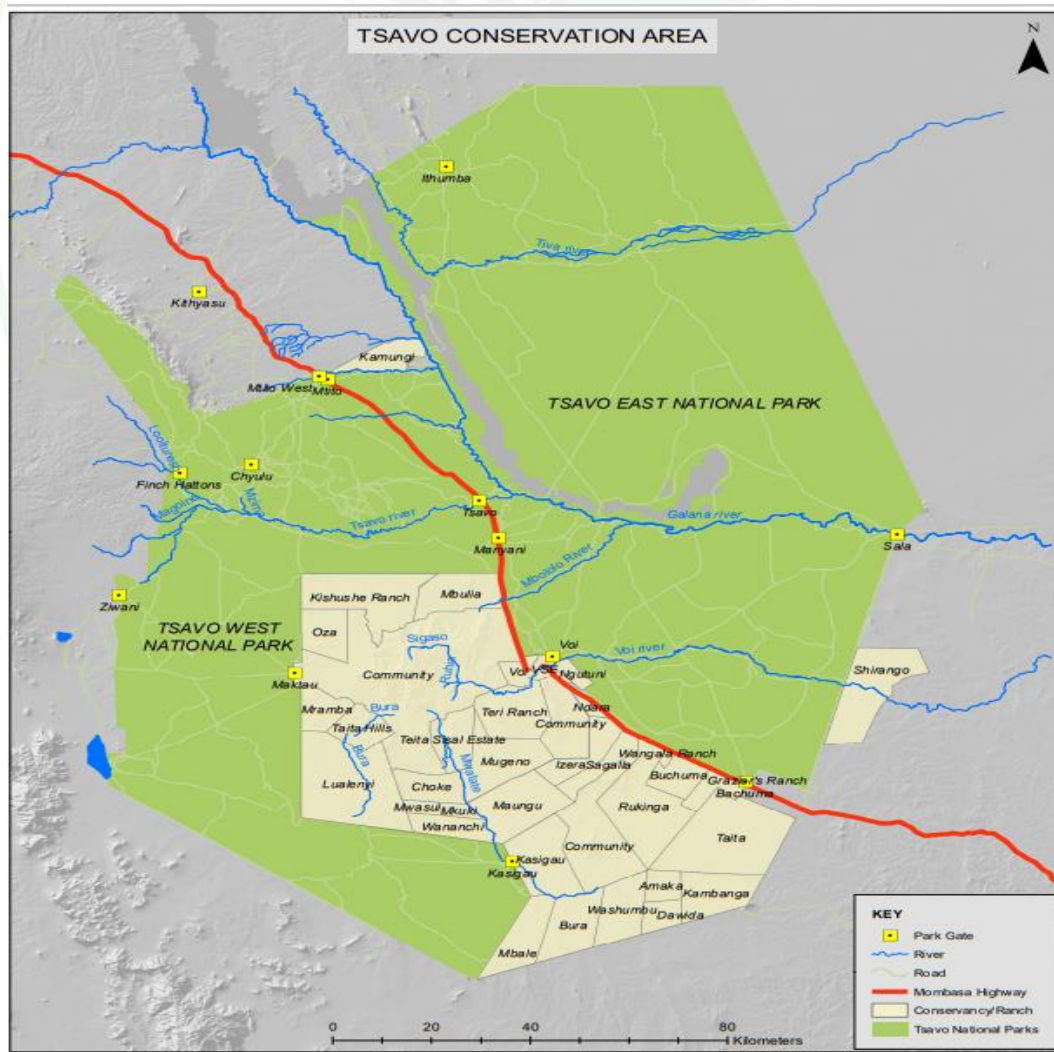
Terms of Reference (ToR)

Developing a landscape tourism map for Taita Taveta County with focus on the conservancies and community areas

1. Background

Tourism in Taita Taveta has over the years been centered on the Tsavo National Park which is the largest conservation area in Kenya and covers up to 65% of the County land mass. In recent years, conservancies have come up as a unique source for visitor experience through the products they offer such as night game drives, guided walks, and bike riding which allow for a close and personal adventure with the wildlife they love and an opportunity to interact with local communities.

Taita Taveta Wildlife Conservancies Association (TTWCA) is a consortium of about 21 ranches, 7 conservancies and about 22,000 members. The 28 ranches and conservancies cover over 950,000 acres that represents approximately 24% of the county see table and map below.



LIST OF TTWCA RANCHES/CONSERVANCIES AND ACREAGE LAND SIZE			
NO	DIRECTED AGRICULTURE COMPANY	LOCATION	SIZE ACRES
1	MGENO RANCH	MWATATE	53,000
2	KAMBANGA RANCH	VOI	34,000
3	KASIGAU RANCH	VOI	51694
4	MAUNGU RANCH	VOI	52,465
5	MBALE RANCH	VOI	39,794
6	WUSHUMBU RANCH	VOI	39,930
7	BURA RANCH	VOI	39,794
8	DAWIDA RANCH	VOI	11,120
9	BACHUMA RANCH	VOI	9,884
COMMUNITY RANCHES			
1	OZA RANCH	MWATATE	28,000
2	TERI B	VOI	17,297
3	MRAMBA	MWATATE	30,888
4	MBULIA RANCH/CONSERVANCY	VOI	38,000
5	NDARA B	VOI/MWATATE	5,372
6	KISHAMBA B	VOI	26,000
7	MARUNGU HILL CONSERVANCY ASSOCIATION	VOI	2,536.48
8	SHIRANGO CONSERVANCY	KILIFI	60,000
9	KAMUNGI CONSERVANCY	MAKUENI	6,000
PRIVATE RANCHES			
1	LUALENYI RANCH	MWATATE	103,000
2	TAITA RANCH	VOI	96,000
3	RUKINGA RANCH	VOI	85,066
4	LAKE JIPE CONSERVANCY	TAVETA	1,100
5	SAGALLA RANCH	VOI	5,090
6	CHALONGO CONSERVANCY	VOI	94
INDIVIDUAL RANCHES			
1	KUTIMA RANCH	MWATATE	12,543
2	CHOKO RANCH	MWATATE	12,504
3	AMAKA RANCH	VOI	16,000
4	WANGALA RANCH	VOI	5,001
5	NDARA RANCH	VOI	46,018
6	IZERA RANCH	VOI	22,000
7	MWASUI RANCH	MWATATE	5,122
8	MKUKI RANCH	MWATATE	5,000
COOPERATIVE RANCH			
1	KISHUSHE RANCH	TAITA	60,000

The TTWCA ranches and conservancies are largely untapped tourist destinations with Ngutuni, LUMO and Taita Hills Wildlife Sanctuary the only prominent areas visited. The landscape offers new attractions that have a variety of wildlife and scenic areas to be explored. The community areas comprising mostly of the famous Taita Hills which hosts unique bio diversity offer the opportunity for tourists to interact with the Taita Taveta people and carry out activities such as mountain climbing, visit historical museums, sacred shrines, and beautiful water bodies and sources.

There is great potential for local tourism in the ranches, conservancies and community areas with the SGR having two stations at Voi and Miasenyi making it ideal for visitors from Nairobi and Mombasa to book weekend holidays though what is lacking is awareness on the existing tourist facilities and attractions.

2. Objectives

The objective of this ToR is to;

- 1) Carry out a mapping exercise of the tourist facilities (lodges, hotels, camps and picnic sites), scenic attractions (hills, rocky outcrops, forests and natural features), water ponds that attract wildlife, water bodies (lakes, rivers, streams and dams), museums, cultural sites and World War sites.
- 2) Develop and design a tourism map for Taita Taveta County conservancies and community areas.

3. Scope of work

The consultants shall work on developing a comprehensive Tourism Map detailing all the Points of Interest (POI) for the conservancies and ranches rangelands, and community areas including the Taita Hills. This will include collecting;

- i. Spatial GPS Coordinates of all the Hotels, Lodges, Camps and picnic sites in the conservancies and ranches
- ii. Spatial GPS Coordinates of all scenic attractions; hills, rocky outcrops, forests and natural resources
- iii. Spatial GPS coordinates of all water ponds that attract wildlife, lakes, streams and dams
- iv. Spatial GPS coordinates of local museums, cultural sites and world war sites
- v. Develop and design printable tourism map with graphics, illustrations and layouts featuring all the Points Of Interest (POI)

Outcomes;

- Spatial GPS coordinates of all POI collected
- A printable tourism map developed

4. Required qualifications

- Qualified cartographer, GIS technician or relevant skills

5. Timeline of activities

The project will begin from the 18th of January 2021 and completed on the 29th of January 2021.

- **Day 1 – 7:**Collection of spatial coordinates of POI
- **Day 8 – 12:**Developing and designing of printable map with graphics, illustrations and layouts featuring all the POI

6. Budget

Daily rate of payment will be based on qualification and experience of the consultant. Maximum number of days should not be more than 8 days.

7. Schedule of payments and deliverables

Payment amount (KES) Deliverable

- 25% upon signing the contract by the consultant
- 25% upon submission of draft report, and approval by the Project Manager (by 26th of January 2021)
- 50% upon submission of final report, and approval by the Project Manager (by 29th of January 2021)